

# Diesel Engines Series 60

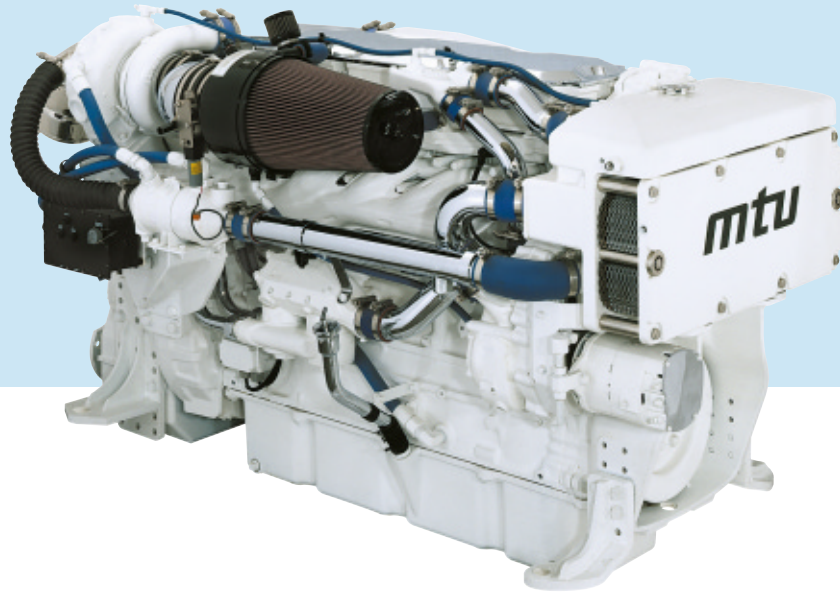
for Marine Applications

Intermittent Maximum 1D

466 - kW

634 - mhp

625 - bhp



**Compliant**  
with MARPOL 73/78 (IMO)  
Annex VI NO<sub>x</sub> Limits

## Engine Specifications

|                 |  |
|-----------------|--|
| Version         | In-line 6 cylinder                       |
| Displacement    | 14.0 liters (855cu in)                   |
| Bore and Stroke | 133 mm x 168 mm<br>(5.24 in. x 6.61 in.) |
| Description     | Turbocharged<br>and charge air cooled    |
| Governor        | DDEC                                     |
| Port Model      | 6062HK35                                 |
| Starboard Model | 6062HK34                                 |

Typical applications

- Pleasurecraft

## Standard Power Rating

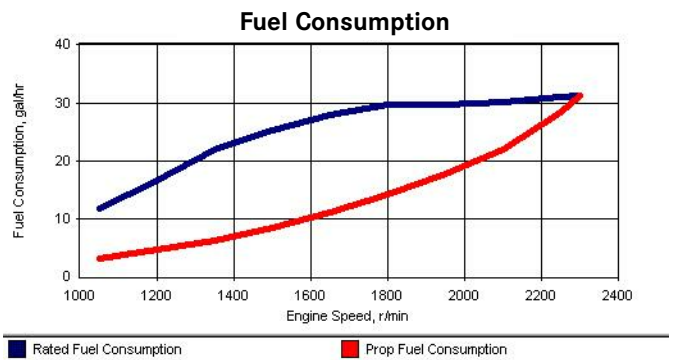
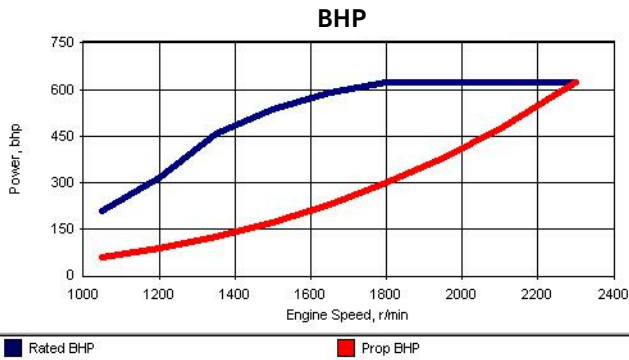
| Air Temp. 25 °C       | kW  | mhp | bhp       | rpm  |
|-----------------------|-----|-----|-----------|------|
| Sea Water Temp. 25 °C |     |     |           |      |
| Rated Power           | 466 | 634 | 625       | 2300 |
| Rating Conditions     |     |     | SAE J1228 |      |

## Standard Boat Profile

100% Power, 10% Time  
75% Power, 50% Time  
50% Power, 20% Time  
<10% Power, 20% Time



DaimlerChrysler Off-Highway



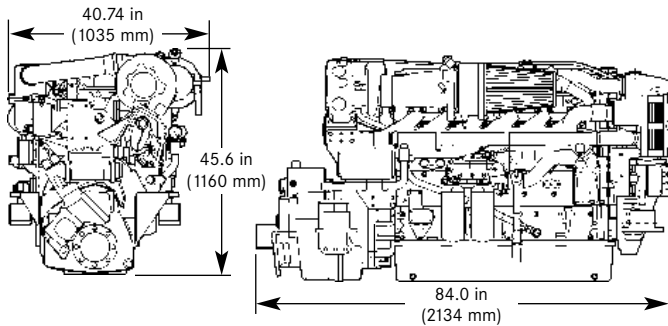
Power output guaranteed within +2/-0% at SAE J1228 conditions:  
 77°F (25°C) air inlet temperature  
 29.31 in. Hg (99 kPa) dry barometer  
 100°F (38°C) fuel inlet temperature  
 .853 specific gravity at 60°F (15°C)

Performance shown includes:  
 Air intake restriction: 10 in. H<sub>2</sub>O (2.5kPa)  
 Exhaust back pressure: 15 in. H<sub>2</sub>O (3.7kPa)  
 Fuel Density: 7.11 lb/gal

### Rating Definition - Maximum 1D

The intermittent maximum rating is normally reserved for yachts with long-range cruising capability and other high performance craft with low to moderate load factors. Maximum continuous cruising speed is 2100 RPM, and the use of full rated power should be limited to 10% (average) of operating time.

### Dimensional Information



Dry Weight w/ TD5114A Marine Gear: 4,240 lbs. (1923 kg)

All dimensions are approximate. For complete dimensional information, refer to installation drawing provided by your authorized Detroit Diesel Corporation representative. Typical marine transmission shown.

### Standard Equipment

**Main Engines** - Water-cooled exhaust components; Aluminum flywheel housing size SAE #1, Work-boat blue finish

**Fuel System** - Electronic unit injection system; secondary fuel filter mounted on engine

**Engine Oil System** - Dual filters mounted on engine

**Engine Cooling System** - Titanium plate modular heat exchanger system with integral fuel cooler; sea water cooled charge air cooler; gear driven self-priming raw water pump with 2.5" inlet

**Air Inlet System** - Air intake filter with silencer and closed breather system; 24V emergency air shutdown

**Electrical** - Starter: 24V, Alternator: 24V/100 amp, belt driven

**Engine Mounting** - Engine mounts with isolators

**Port/STBD Engine Configuration** - For ease of service and maintenance

### Optional Equipment

**Engine Lube System** - Rear mount single oil filter system; remote mount lube oil filters - single or double

**Electrical** - 12V starter; 12V alternator/130 amp; 12V Amot air shutdown

**Accessory Drives** - SAE A (front gear train), Front crankshaft pulley for use with V-belts & interface for remote PTO

**Marine Gear Transmissions** - Available in numerous ratio's & configurations

**Electronic Engine Monitoring & Controls** - Available

**Transmission Options** - Trolling valve, companion flange and PTO

**Exhaust** - Raw water cooled stainless elbow

**Electric Priming Pump** - Mounted on Sea Pro 152 and 511 primary fuel filter / water separator

**Marine Society Certification** - Available upon request



For more information contact your MTU or DDC distributor. All Detroit Diesel distributors in NAFTA are authorized MTU distributors.  
[www.mtu-online.com](http://www.mtu-online.com) / [www.detroitdiesel.com](http://www.detroitdiesel.com) / [marine@detroitdiesel.com](mailto:marine@detroitdiesel.com)